

ABEJA, Inc. Presents

SIX2018

革新的AIの連鎖が始まる日



Today's Global AI Strategy

世界のAI活用戦略の今

Sengmeng Koo AI Singapore Deputy Director / Head of Strategic Alliances

Hiroki Saito NVIDIA Director

Takuya Oikawa Engineering Adviser

Objective

本日のゴール

- **Know the global AI market**
世界におけるAI活用の現状を知る
- **Understand the meanings to utilize AI into your business**
日本企業のAI活用の意義を再理解する

Agenda

本日の流れ

1. The Introduction of AI Singapore

Sengmeng氏によるAI Singaporeの紹介

2. Talk Session

AI utilization in global グローバルにおけるAI活用

AI utilization in Japan market 海外から見る日本におけるAI活用

The future of AI utilization 産業のAI活用の未来と今企業がすべきこと

Speaker

登壇者



Guest
Sengmeng Koo

AI Singapore
Deputy Director



Guest
Hiroki Saito

NVIDIA
Director



Moderator
Takuya Oikawa

ABEJA, Inc.
Engineering Adviser

Presentation

Shaping an AI-powered Nation: A Singapore perspective

シンガポールから見たAI促進国



AI SINGAPORE

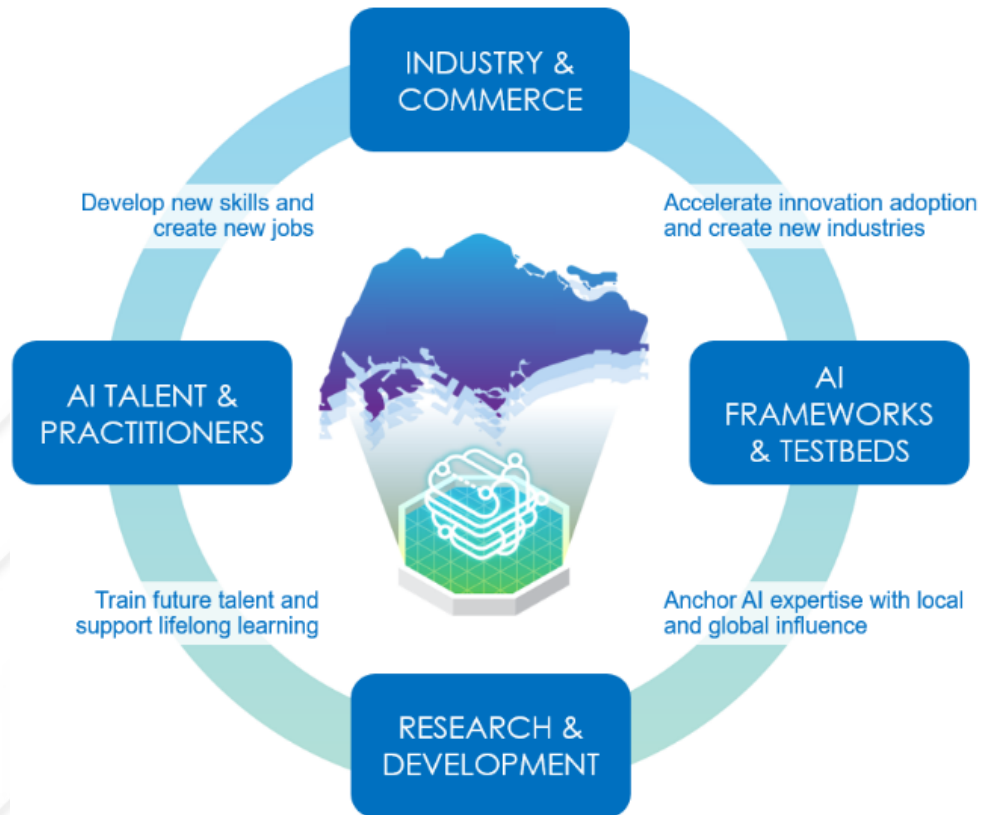
Shaping an AI-powered Nation: A Singapore perspective

Presented to ABEJA SIX 2018
Toranomon Hills Forum, Tokyo, Japan
22 February 2018

1. How to build a AI-ready economy for Singapore ?
2. How can we harness the promise of AI to deliver national impact ?
3. What kind of AI is important for Singapore ?

Delivering AI impact

Develop national capabilities in Artificial Intelligence to create economic and societal impact and put Singapore on the AI world map.



ECONOMY IMPACT



Industry
R&D
Jobs



Manpower
spin-off to
Industry



Value-add
Contributions
to Economy

SCIENTIFIC IMPACT



Top-tier
Research
Publications



Smart
Technologies
Deployed



Industry
R&D
Spending



Strategic Thrusts



AI RESEARCH

Invent AI technologies for the future. Conduct **Fundamental Research** and tackle important technical challenges. Gather top minds and nurture AI talents.



AI TECHNOLOGY

Create significant economic and social impact. Identify and focus attention on well-defined **AI Grand Challenges**, and promote bold ideas and innovation approaches to solving them.



AI INNOVATION

Launch **100 AI-Experiments** for end-users, facilitate access to AI talents, create shared AI tools and resources to accelerate industry innovations.



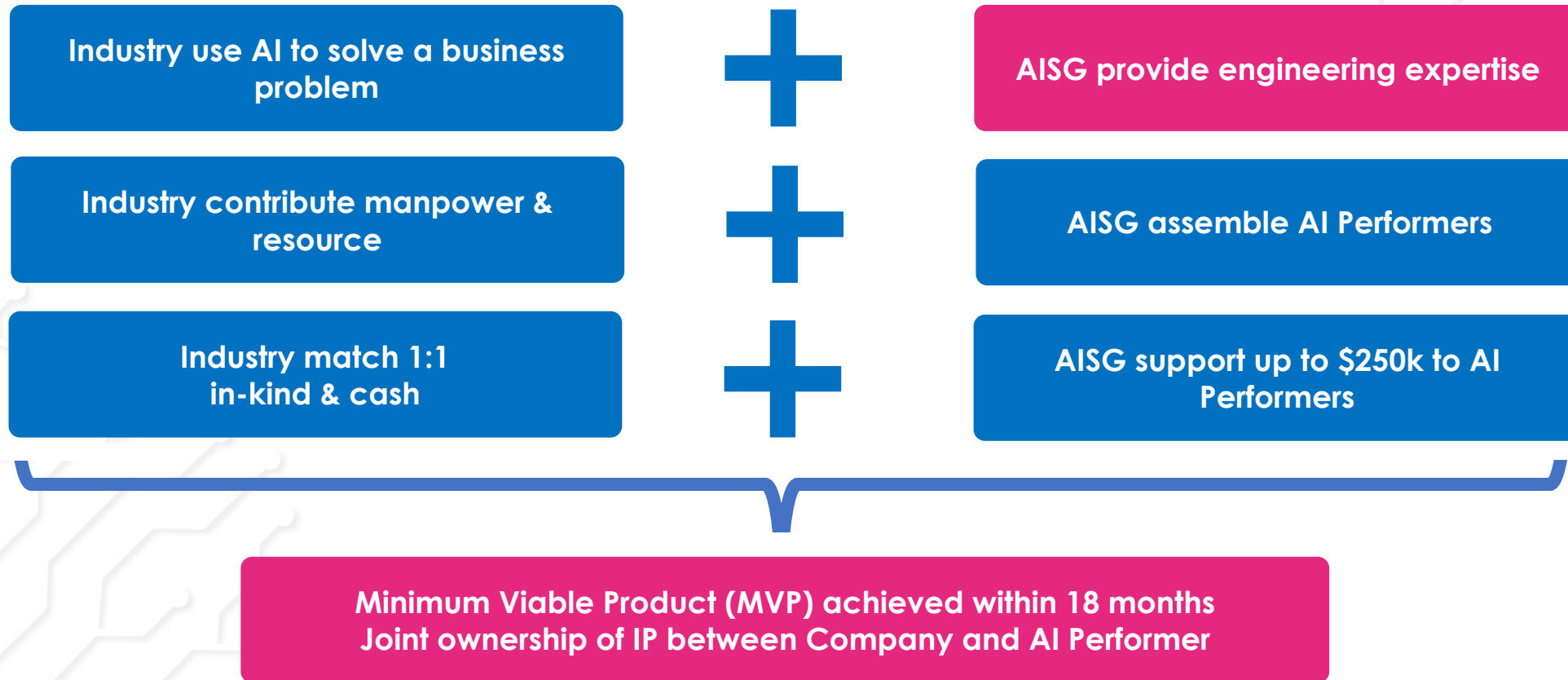
AI Innovation

100 Experiments (100E)

Proving the business value of AI

100 Experiments (100E)

“Growing our own timber”



AI Apprenticeship Programme (AIAP)

Produce 200 professionals with practical AI skills and knowledge in the next 3 years



3 months : Online classroom and hands-on mini projects

6 months : Work on actual industry projects (100E) as part of capstone, mentored by AISG senior AI professionals

Engaged Industry Partners (and growing...)

Health



Agencies



Finance



MNCs / LLEs



Urban Solutions



SMEs / Start-Ups





AI Technology

AI Grand Challenges

Long term, national research goals

Defining AI Grand Challenges

Important issues and problems faced by Singapore and the world, that can be effectively addressed with AI technologies and innovation.



HEALTHCARE



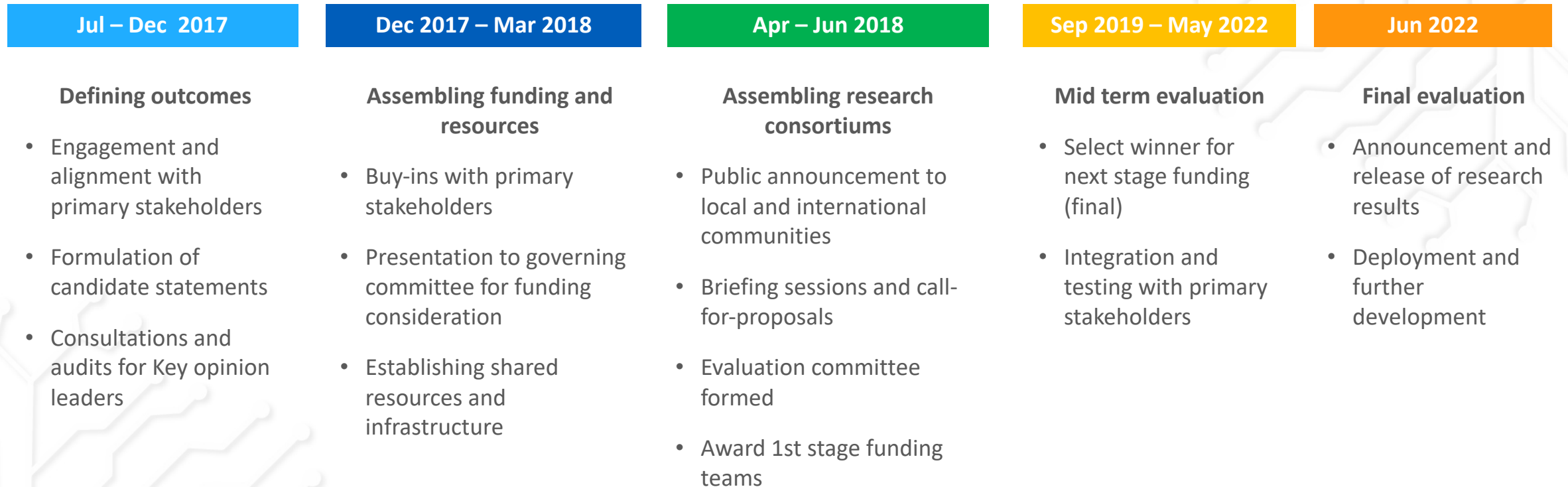
URBAN SOLUTIONS



FINANCE

AISG engineers large-scale, long-term research goals to demonstrate breakthroughs, uncover technical bottlenecks and commercial surprises to bring about sectoral transformations.

Designing a national research goal



Considerations

1. How can this be done in 4-5 years?

- Every statement identifies **a grand objective** achievable in 10-15 years time
- Every statement includes **a challenge** achievable in 4-5 years time

2. How do you measure success?

- Each statement defines a set of clearly measurable success criteria
- Each challenge defines an “end point” or target to meet

3. How can you tell the improvements are all due to the AI?

- For each challenge, a comparison with or without AI can be set up
- The main focus is on human-AI collaboration, coordination, and cooperation

Considerations (cont)

4. Hasn't this been done by someone else?

- Not in the integrated way to generate the full solutions – there are individual systems that address specific parts of the problems
- Not in the translational research setting built into the AISG Grand Challenge Program
- No effective working solutions in Singapore or the world – as far as we know
- And yes, we have done extensive background and literature search

5. What if the project fails at the end, after spending so much money?

- Target domains and technology anchors are carefully selected so that the solutions can be generalized to other health domains and applications
- Even if the final challenge target is not met – there will be incremental results and deliverables that are useful
- E.g., Even if the rocket cannot launch – the propulsion engine technologies developed along the way are still very useful

A decorative background on the left side of the slide featuring a complex, white, stylized circuit or neural network pattern on a light gray background. The pattern consists of numerous interconnected lines and nodes, resembling a microchip or a neural network diagram.

AI Research

Fundamental research

*Investing in strategic research vital to
Singapore*



Goals for AI Research Pillar

What are the gaps in current AI technologies?

- Technical surprises that might lead to jump in AI's capabilities?

What are the new AI advances with positive economic and societal impacts?

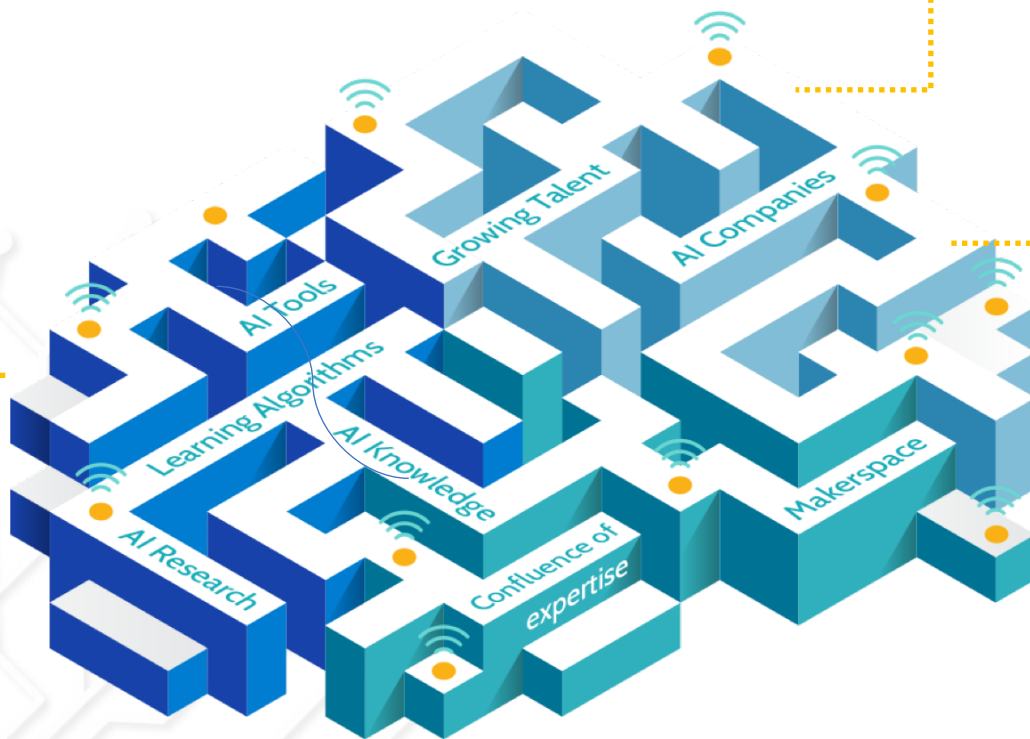
- Problems and bottlenecks that are ripe for being solved or addressed with AI

How can we use AI safely and securely?

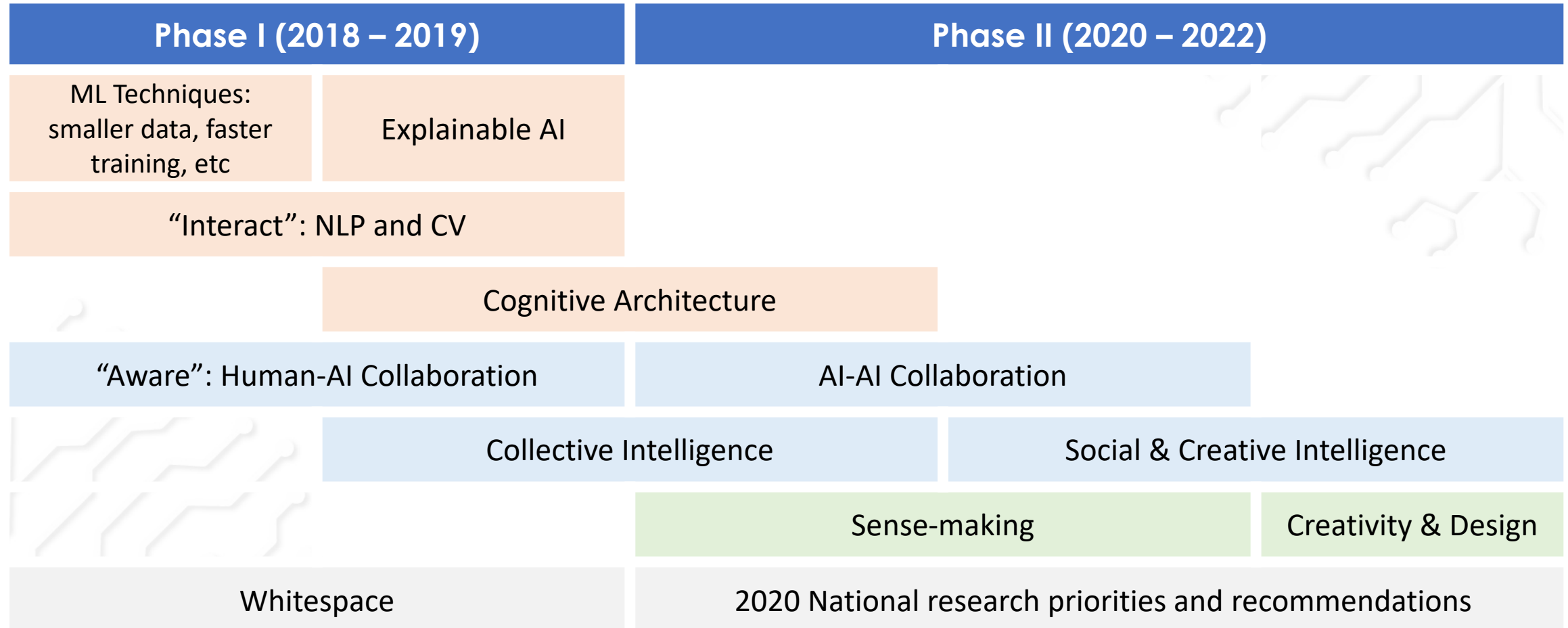
- Understanding and overcoming risks and costs of deploying AI systems
- Designing secure AI systems
- Validation of AI systems – predictable and explainable AI

How to design AI to align to the ethical, legal and societal principles?

- Accountability, liability issues arising from AI
- Implementing norms and values in AI systems



Priority areas





AI SINGAPORE

Thank you

Sengmeng

skoo@aisingapore.org



AI SINGAPORE

A KEY PILLAR IN SUPPORT OF SMART NATION

Artificial intelligence (AI) can lead to substantial economic growth and vastly improve our standard of living. AI Singapore (AISG) is a national initiative to nurture talents in AI, increase AI industry translation and commercialisation, drive innovation and position Singapore at the forefront of the global AI industry.

National Investment

Through AISG, the National Research Foundation (NRF) will invest \$150 million over 5 years in building top-tier AI capabilities and other game-changing solutions.



Objectives of AISG



Government Agencies

Large Local Enterprises

Individuals

SMEs & Start-ups

MNCs

Research Institutions



Agency for Science, Technology and Research

Focus Application Areas

AISG will perform use-inspired research to solve global challenges and improve Singaporeans' lives.

1 Health

Seamlessly integrated care environments powered by humans and machines, personalised treatments and accelerated drug discovery.

2 Smart Cities

Using technology, real-time monitoring and data acquisition to manage urban ecosystems, infrastructure and tackling inefficiency.

3 Finance

Automation and democratisation of financial services, machine learning-powered trading, risk modelling and compliance.

AISG Partners

National Research Foundation

Smart Nation & Digital Government Office

Economic Development Board

Infocomm Media Development Authority

Integrated Health Information Systems

SGInnovate

Institutes of Higher Learning



AISG will leverage on the universities' areas of expertise in multidisciplinary capabilities and technologies that will aid research and innovation in AI.

Likewise, access to valuable databases and strengths in areas like machine learning, natural language processing (NLP) and robotics are crucial to the success of the AISG programme.

Presentation

Shaping an AI-powered Nation: A Singapore perspective

シンガポールから見たAI促進国

Talk Session

AI utilization in global

グローバルにおけるAI活用

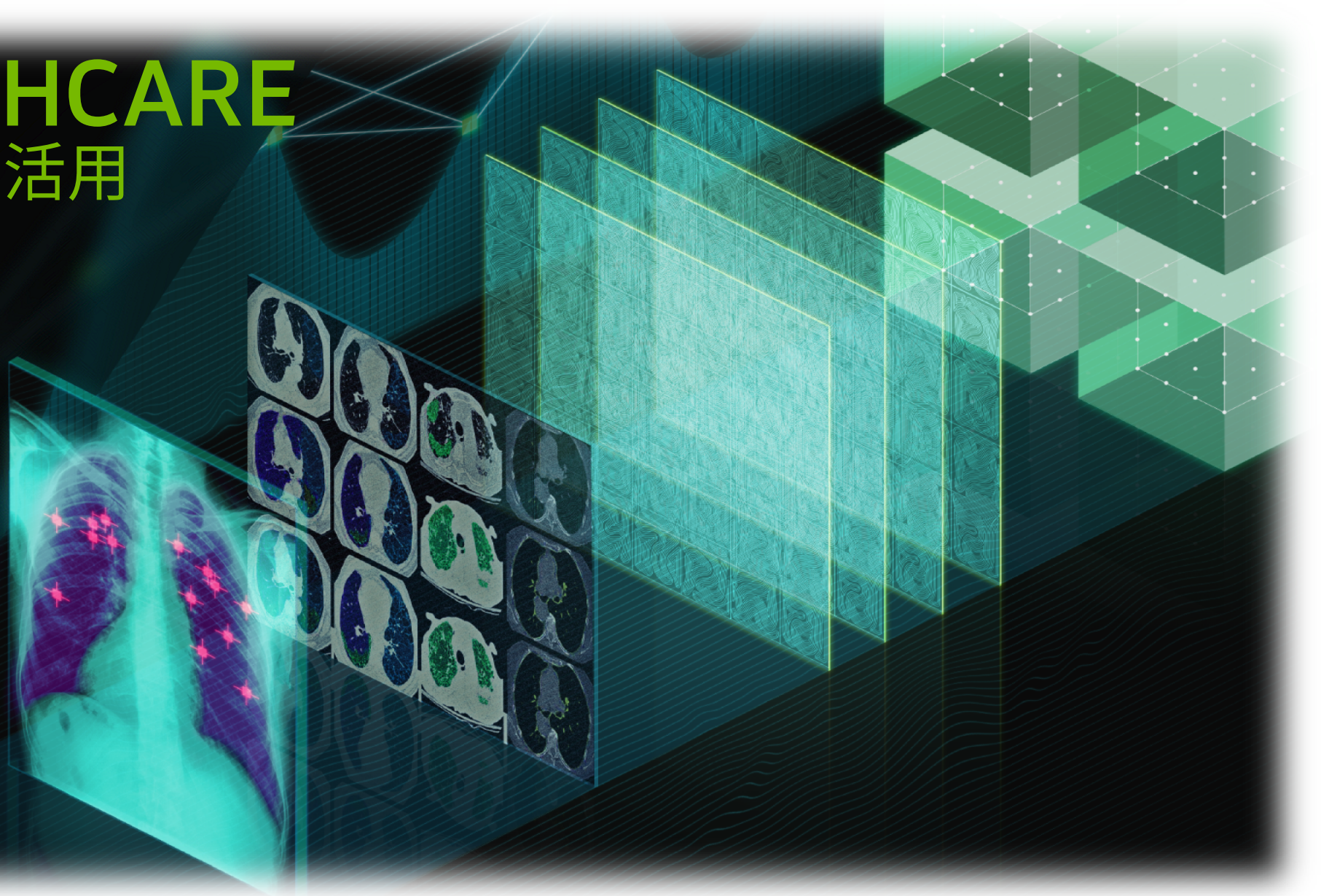


AI CITY

Copyright © 2018 ABEJA, Inc. All rights reserved.

AI IN HEALTHCARE

医療におけるAIの活用





INTELLIGENT MACHINE

AIの活用による インテリジェントマシン





Talk Session

AI utilization in Japan market

海外から見る日本におけるAI活用

Talk Session

The future of AI utilization

産業のAI活用の未来と今企業がすべきこと

Wrap Up

Thank you